

Bazuba Magazine Ad Specs

(Mechanical Requirements)

2 PAGE SPREAD



Bleed	Non-bleed
16 3/4" x 9 1/8"	16 3/4" x 9 1/8"
Trim	
16 3/4" x 9 1/8"	

Note: Allow 3/16" gutter on both pages for binding

FULL PAGE



Bleed
9 1/8" x 11 1/8"
Non-bleed
7 7/8" x 9 7/8"
TRIM
8 7/8" x 10 7/8"

1/2 PAGE



Bazuba Magazine Ad Specs

(Mechanical Requirements)

Bleed

9 1/8" x 5 9/16"

Non-bleed

7 7/8" x 4 15/16"

1/4 PAGE

VERTICAL



Non-bleed

7 7/8" x 3 1/2"

2/3 PAGE

VERTICAL



Bleed

6" x 11 1/8"

Non-bleed

5" x 9 7/8"

1/3 PAGE

VERTICAL

Bazuba Magazine Ad Specs

(Mechanical Requirements)



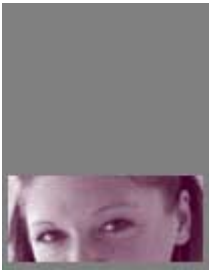
Bleed

3 1/8" x 11 1/8"

Non-bleed

3 1/2" x 9 7/8"

1/3 PAGE HORIZONTAL



Non-bleed

4" x 5"

Trim Size: 8 7/8 x 10 7/8

Text Paper: 60# Coated Text
Stock: 80# Cover Stock

Cover Page Count: 4

Bazuba Magazine Ad Specs

(Mechanical Requirements)

!

Four-color process CMYK printing:
No spot colors, PMS colors must
be converted to CMYK.

! Please include contract color proof for all materials submitted
in digital format.

Send materials to:
Attn: Sean Mitchell
Director of Production

!

Digital files preferred. Mac format
ZIP and JAZ Discs,
CD-R or via email.

! All specifications and requirements subject to change without
notice.

BAZUBA MAGAZINE
425 Summit Ridge Pl.
#213
Longwood, FL 32779
[Tel] **407 | 862-9665**
[Fax] **407 | 862-9665**

!

File formats: Quark Xpress,
Illustrator, Photoshop, Adobe PDF.
Include all embedded fonts,
photography and artwork. PC files
not acceptable.